

FOR LEASE



183 Great Eastern Hwy, Belmont

First Floor Office Suite

305 sqm

8 Car Bays

Fully Partitioned

Signage Opportunities Available

Eric Rogers

m: 0412 228 555

e: egr@metwaywa.com

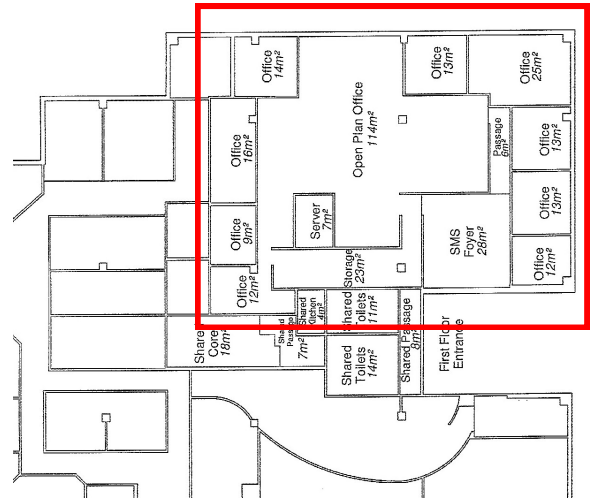
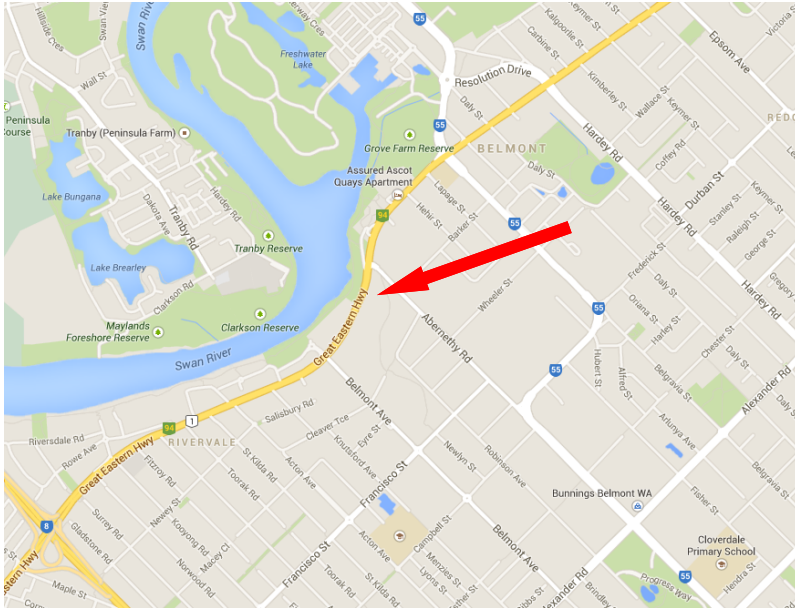
9228 2255 (24 Hours)

www.metwaywa.com

Licensed Estate Agents. Property Consultants. Auctioneers.

Real Estate and Business Agent Member of the Real Estate Institute of WA (Inc)
Licensee: Cityfield Investments Pty Ltd (ACN 078 234 974) as Trustee for the Real Estate Trust - Trading as Metway Real Estate (ABN 93 918 167 259)

183 Great Eastern Hwy, Belmont



Location

High exposure and accessible location on the corner of Great Eastern Highway and Abernethy Road. Easy access to Airport, Perth CBD and main industrial areas.

Premises

Fully partitioned with excellent natural light and providing a functional, well laid-out office design ready to occupy.

Parking

Good onsite parking available.

Lettable Area

305 sqm

Rental (+GST)

\$175 / sqm pa

\$4,500/ pcm

Outgoings (+GST)

\$110 / sqm pa

\$2,800/ pcm

Parking

8 On-Site Car Bays

\$100 per bay per month (+GST)

Lease Term

3-5 Years

Eric Rogers

m: 0412 228 555

e: egr@metwaywa.com

9228 2255 (24 Hours)

www.metwaywa.com

Disclaimer: The particulars contained in this brochure do not form part of any contract. While care has been taken in this presentation, no representation or warranty is made by the vendor/s or the selling agents. No responsibility is accepted for the accuracy of any information in this brochure. All persons must make their enquiries and satisfy themselves in all respects. Privacy Policy: The agents are committed to protecting your privacy. If at any time you choose not to receive information from them or wish to amend your personal information please notify them directly.