

FOR LEASE



251 Adelaide Tce, Perth - Level 11

Prestige Fully Fitted Offices

305sqm + 4 Car bays

River Views

Modern Fitout

Central Location

Eric Rogers

m: 0412 228 555

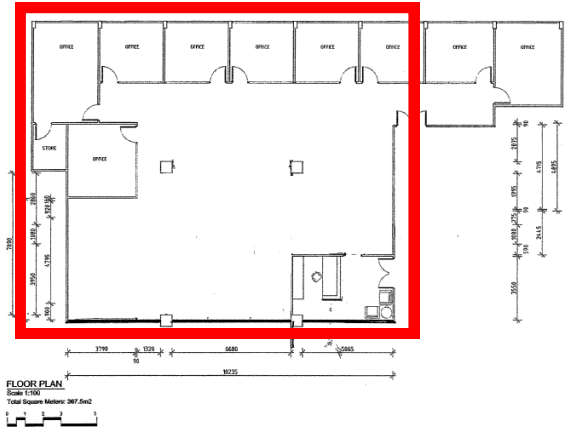
e: egr@metwaywa.com

9228 2255 (24 Hours)
www.metwaywa.com

Licensed Estate Agents. Property Consultants. Auctioneers.

Real Estate and Business Agent Member of the Real Estate Institute of WA (Inc)
Licensee: Cityfield Investments Pty Ltd (ACN 078 234 974) as Trustee for the Real Estate
Trust - Trading as Metway Real Estate (ABN 93 918 167 259)

251 Adelaide Tce, Perth



Location

Adelaide Terrace is the eastward extension of St Georges Terrace.

The location has excellent parking (both onsite and nearby), good Freeway access and is in close proximity to the Duxton Hotel, Law Courts and the Government House.

Premises

Fully-partitioned modern offices with direct and extensive river views, located on the 11th floor of this premium office building formerly the offices of a major mining company. The office has significant internal furnishings & fully air-conditioned.

Lettable Area

305 sqm

Rental (+GST)

\$150 /sqm - \$175 /sqm pa

\$3,800 /pcm - \$4,500 /pcm

Outgoings (+GST)

\$131 / sqm pa

\$3,330 / pcm

Parking

4 Secure Car Bays

\$300 per bay per month (+GST)

Lease Term

3 - 5 Years

Eric Rogers

m: 0412 228 555

e: egr@metwaywa.com

9228 2255 (24 Hours)

www.metwaywa.com

Disclaimer: The particulars contained in this brochure do not form part of any contract. While care has been taken in this presentation, no representation or warranty is made by the vendor/s or the selling agents. No responsibility is accepted for the accuracy of any information in this brochure. All persons must make their enquiries and satisfy themselves in all respects. Privacy Policy: The agents are committed to protecting your privacy. If at any time you choose not to receive information from them or wish to amend your personal information please notify them directly.