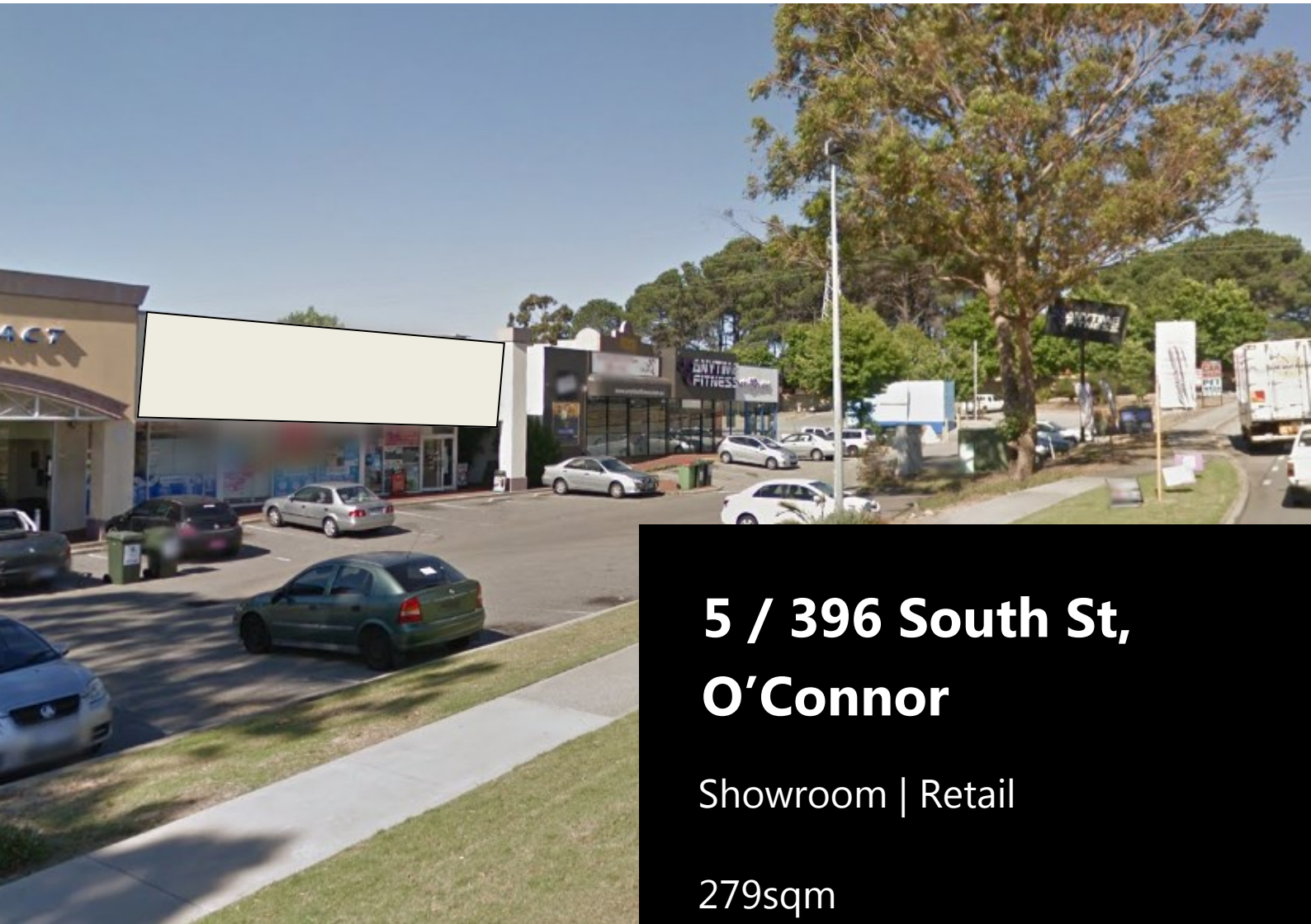


FOR LEASE



**5 / 396 South St,
O'Connor**

Showroom | Retail

279sqm

High Profile Street Front Location

Substantial Parking On-Site

Wide Variety of Uses

Eric Rogers

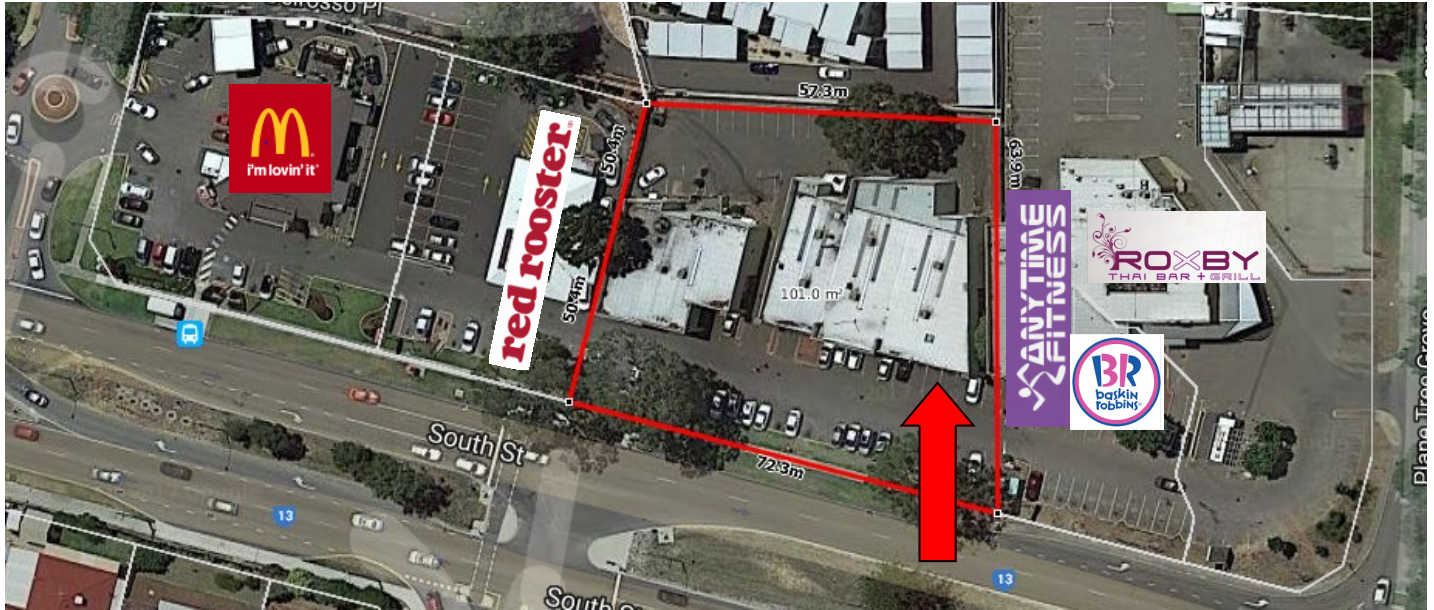
0412 228 555
egr@metwaywa.com

9228 2255 (24 Hours)
www.metwaywa.com

Licensed Estate Agents. Property Consultants. Auctioneers.

Real Estate and Business Agent Member of the Real Estate Institute of WA (Inc)
Licensee: Cityfield Investments Pty Ltd (ACN 078 234 974) as Trustee for the Real Estate
Trust - Trading as Metway Real Estate (ABN 93 918 167 259)

5 / 396 South St, O'Connor



Location

Positioned between Fremantle and the Kwinana Freeway the property is in close proximity to such tenants as Bunnings, Retravision, Supercheap, McDonalds and Red Rooster the property occupies a prominent location.

Premises

Full street front exposure together with a rear loading area and a glazed shop front. Excellent onsite parking for clients and customers and easy access off South Street.

Lease

The owners are seeking dynamic and resourceful tenants to take full advantage of this magnificent location. They are offering attractive, flexible terms and conditions to the right tenant.

Lettable Area

279 sqm

Rental (+GST)

\$230 / sqm pa

\$5,350 / pcm

Outgoings (+GST)

\$72 / sqm pa

\$1,675 / pcm

Parking

Substantial On-Site Parking

Lease Term

3-5 Years

Eric Rogers

0412 228 555

egr@metwaywa.com

9228 2255 (24 Hours)

www.metwaywa.com

Disclaimer: The particulars contained in this brochure do not form part of any contract. While care has been taken in this presentation, no representation or warranty is made by the vendor/s or the selling agents. No responsibility is accepted for the accuracy of any information in this brochure. All persons must make their enquiries and satisfy themselves in all respects. Privacy Policy: The agents are committed to protecting your privacy. If at any time you choose not to receive information from them or wish to amend your personal information please notify them directly.