

FOR SALE



Lots 6 + 7 Part Level 2 / 524 Hay St, Perth

270 sqm

Holding Income

Secure your future!

Priced to Sell! - \$2,750 /sqm!!!

Eric Rogers

m: 0412 228 555

e: egr@metwaywa.com

9228 2255 (24 Hours)
www.metwaywa.com

Licensed Estate Agents. Property Consultants. Auctioneers.

Real Estate and Business Agent Member of the Real Estate Institute of WA (Inc)
Licensee: Cityfield Investments Pty Ltd (ACN 078 234 974) as Trustee for the Real Estate
Trust - Trading as Metway Real Estate (ABN 93 918 167 259)

524 Hay St, Perth

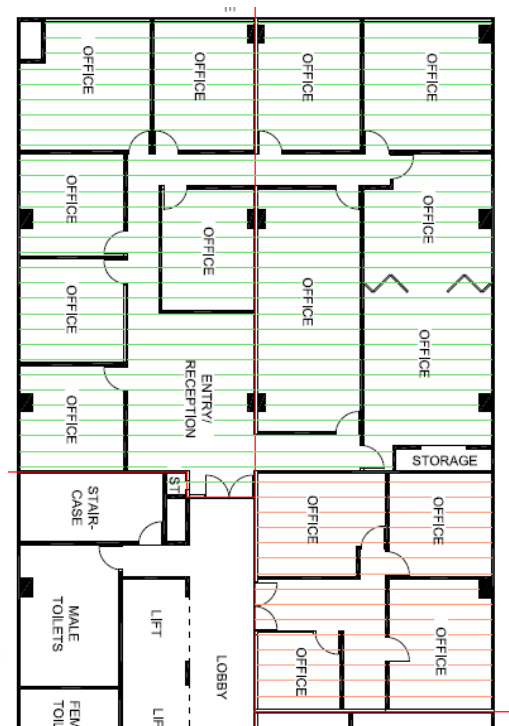


For Sale

Well located fully partitioned office suite in very close proximity to the new District Court Building and the well established Magistrates Court the new Westin Hotel, and the Mercure Hotel located on the corner of Hay and Irwin Streets. The offices are approximately 200 metres from the Hay St Mall.

Central office well leased with the later opportunity to occupy.

Location	Level 2
Lettable Area	270 sqm
Net Income	\$28,700 (+GST)
Asking Price	\$742,500 (\$2,750/sqm)
Yield	4%



Eric Rogers

m: 0412 228 555

e: egr@metwaywa.com

9228 2255 (24 Hours)

www.metwaywa.com

Disclaimer: The particulars contained in this brochure do not form part of any contract. While care has been taken in this presentation, no representation or warranty is made by the vendor/s or the selling agents. No responsibility is accepted for the accuracy of any information in this brochure. All persons must make their enquiries and satisfy themselves in all respects. Privacy Policy: The agents are committed to protecting your privacy. If at any time you choose not to receive information from them or wish to amend your personal information please notify them directly.