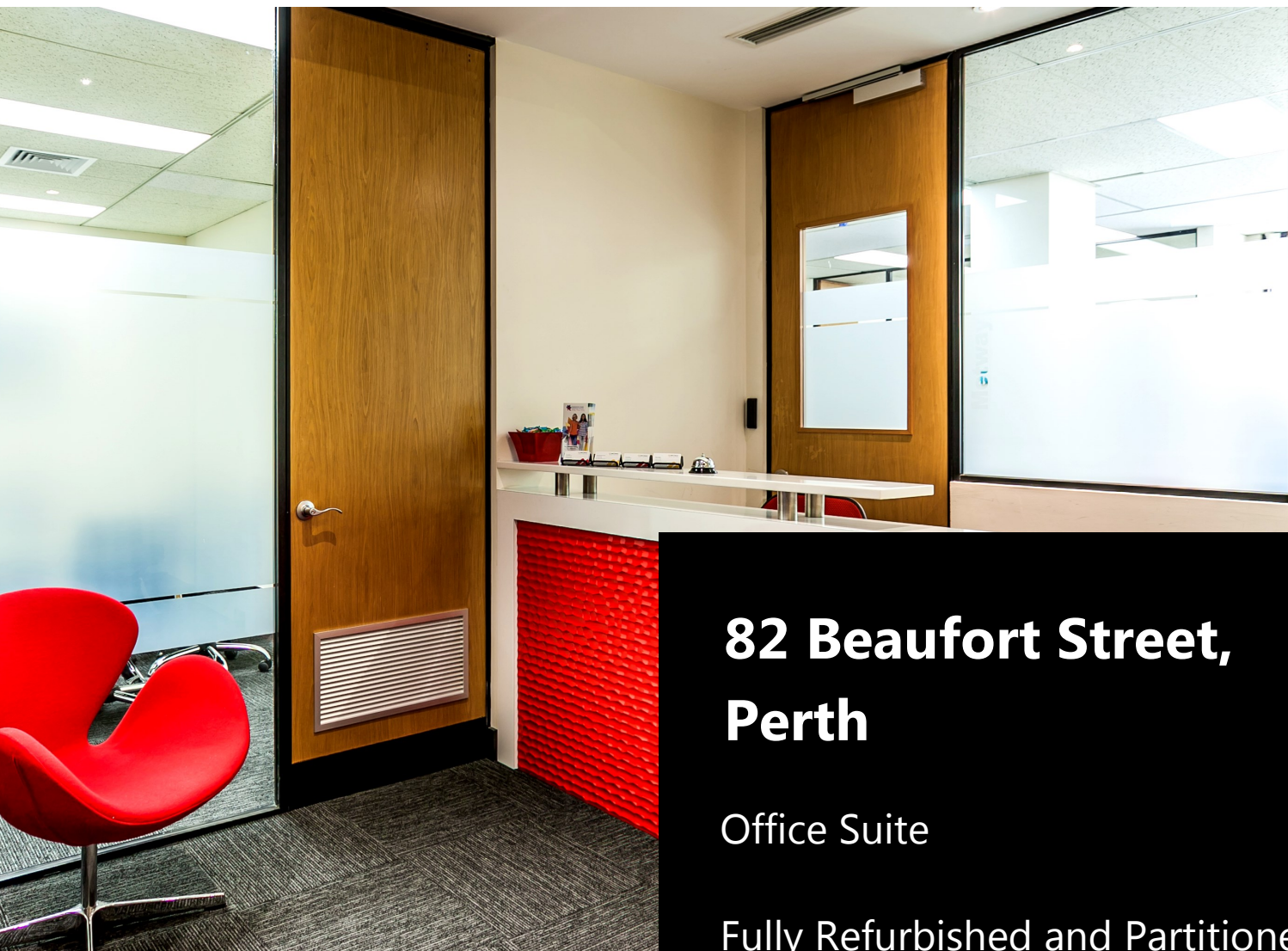


FOR LEASE



82 Beaufort Street, Perth

Office Suite

Fully Refurbished and Partitioned
Ground Floor Office

One Car Bay and One Store
Room On-Site

Eric Rogers

m: 0412 228 555

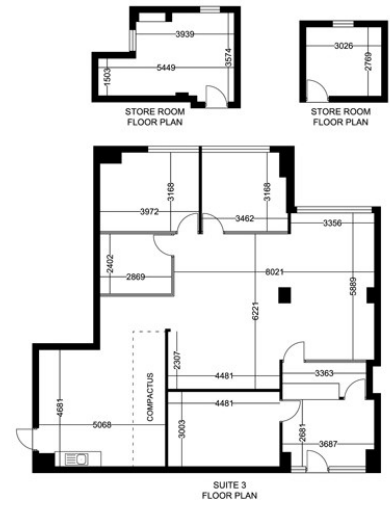
e: egr@metwaywa.com

9228 2255 (24 Hours)
www.metwaywa.com

Licensed Estate Agents. Property Consultants. Auctioneers.

Real Estate and Business Agent Member of the Real Estate Institute of WA (Inc)
Licensee: Cityfield Investments Pty Ltd (ACN 078 234 974) as Trustee for the Real Estate
Trust - Trading as Metway Real Estate (ABN 93 918 167 259)

82 Beaufort Street, Perth



Location

Positioned on the eastern side of Beaufort Street, directly opposite the Perth Museum and a short walk to Perth Train Station. Across the road is the Perth Cultural precinct including the Perth Art Gallery, State Theatre complex and the soon to be redeveloped Perth Museum.

Premises

The premise is a modern, fully partitioned and ground floor office suite with excellent natural light and easily accessible. There is one car bay available on-site.

Lettable Area

141 sqm Office + 25 sqm Storeroom

Rental (+GST)

\$150 psm pa

Outgoings (+GST)

\$100 psm pa

Parking

\$250 pcm (+GST) (+DPI Levy)

Lease Term

3 - 5 Years

Eric Rogers

m: 0412 228 555

e: egr@metwaywa.com

9228 2255 (24 Hours)

www.metwaywa.com

Disclaimer: The particulars contained in this brochure do not form part of any contract. While care has been taken in this presentation, no representation or warranty is made by the vendor/s or the selling agents. No responsibility is accepted for the accuracy of any information in this brochure. All persons must make their enquiries and satisfy themselves in all respects. Privacy Policy: The agents are committed to protecting your privacy. If at any time you choose not to receive information from them or wish to amend your personal information please notify them directly.